

STAY AND STUDY IN WESTERN CANADA

FALL 2023 ENTRY

Non-Interprovincial Agreement
(non-IPA) seats in the WCVN Doctor
of Veterinary Medicine (DVM) program



The Western College of Veterinary Medicine (WCVM) serves as the veterinary college for Western Canada. The annual number of students admitted to the WCVM's Doctor of Veterinary Medicine (DVM) program is outlined in the Interprovincial Agreement (IPA) — a contract between the WCVM and the provinces of British Columbia, Saskatchewan and Manitoba.

The WCVM may offer seats in the DVM program for fall 2023 entry that are not supported by the IPA. Tuition rates for students admitted through non-Interprovincial Agreement (non-IPA) seats will be comparable to rates paid by Canadians who attend international veterinary schools (about \$69,400 per year). Up to 20 non-IPA seats will be available for western Canadian applicants if British Columbia doesn't increase its IPA seat quota from 20 to 40 seats (announcement expected in March 2023) and assuming that the college has a sufficient pool of qualified applicants.





Definition of **TERMS**

IPA

Interprovincial Agreement — a contract between the partner provinces and the WCVm.

Non-IPA seat

A student seat in the DVM program that's not supported by the Interprovincial Agreement (up to 20 seats available for 2023 entry).

IPA seat

A student seat in the DVM program that's supported by one of the partner provinces through the college's Interprovincial Agreement (a minimum of 68 seats available for 2023 entry).

Why is WCVm **WORTH IT?**

The top five reasons why the Western College of Veterinary Medicine's Doctor of Veterinary Medicine program is worth the cost.

#1

WORLD-CLASS DVM PROGRAM

The WCVm offers an internationally-recognized veterinary education program at the University of Saskatchewan (USask) — right in your own region. Our graduates are ready for a broad spectrum of career areas — companion animals, food animals, equine, wildlife, public service, research and industry. Our external partnerships and exchange programs further expand the opportunities available to students.

#2

TOP STUDENTS

A recent analysis of the North American Veterinary Licensing Examination (NAVLE) scores shows that our students are among the top 22nd percentile of DVM graduates worldwide (based on those schools participating in the NAVLE). All veterinary graduates must pass this exam before they can be licensed to practise in North America.

#3

TECHNOLOGY AND TALENT

Our veterinary students have exposure to the most advanced animal health technologies, including the latest in medical imaging equipment for large and small animals, a linear accelerator for pet radiation therapy and a new clinical simulation centre. Our skilled team of faculty and staff have expertise in all aspects of biomedical and veterinary sciences.

#4

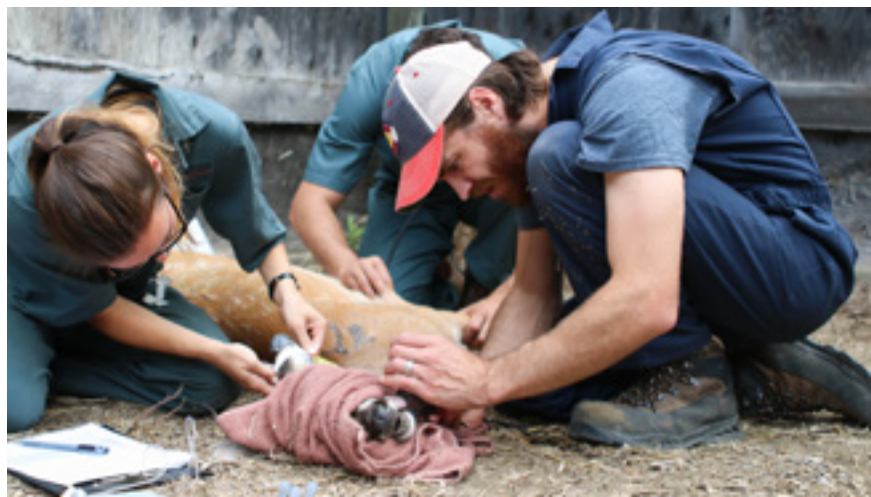
STUDENT SUPPORT

Each year, the WCVm distributes over \$350,000 in academic awards to students for excellence in the veterinary program, leadership and other related technical and non-technical skills.

#5

IDEAL LOCATION

Our geographical position gives us access to a phenomenal and varied caseload that is ideal for educating veterinary students, clinical interns and residents. The WCVm's facilities have undergone extensive renovations, and we can offer veterinary students a comprehensive education at one site without the need for additional travel costs.



Frequently asked **QUESTIONS**



Q. How many non-IPA seats are there?

The WCVm may admit up to 20 western Canadians through non-IPA seats for fall 2023 entry. Non-IPA seats are outside of the 68 provincially-subsidized seats allocated through the college's IPA. Non-IPA seats will be available if B.C. does not increase its IPA seat quota from 20 to 40 seats (announcement expected in March 2023).

Q. Who is eligible to apply for the non-IPA seats?

Non-IPA seats are available to individuals who are eligible to apply for IPA seats as well as individuals who meet the WCVm residency requirements in Alberta. Preference for non-IPA seats will be given to residents of the WCVm's partner provinces (B.C., Saskatchewan and Manitoba). If not all seats are filled, residents of the northern territories and Alberta will be considered.

Q. How much is tuition if I'm admitted through a non-IPA seat?

Students admitted through the non-IPA seats must pay the standard WCVm tuition and fees (about \$14,400 per year) plus an additional, non-IPA tuition of \$55,000 per year. Total tuition costs are approximately \$69,400 per year with equal payments due at the end of September and January. Tuition costs are subject to potential annual increases.

Q. What other costs do I need to budget for?

Saskatoon is a relatively affordable city. Dependent on your personal living/ accommodation preferences, we estimate that students should be able to live on \$15,000 to \$20,000 annually.

Q. What would be the total cost of my DVM degree education at WCVm if I'm accepted through a non-IPA seat?

The total estimated cost for the four-year DVM program — including tuition and living expenses — is about \$340,000 to \$360,000.



Frequently asked QUESTIONS

Q. How can students who are filling these non-subsidized seats finance their veterinary education?

Students may consider the following:

- **Personal loan or line of credit.** Many banks offer lending programs targeted at students who are enrolled in professional colleges such as medicine, dentistry, veterinary medicine and law.
- **Student loans** offered through their provincial governments.

Q. How do I apply for a non-IPA seat?

The application form, which is the same for both IPA and non-IPA seats, can be found on the WCVN admissions web page. The deadline to apply for fall 2023 entry is Dec. 1, 2022.

Q. What is the admission/selection process for the non-IPA seats?

The WCVN uses the same admission requirements and selection criteria for both IPA and non-IPA seats. All applicants who meet the WCVN's residency requirements will be initially considered for an IPA seat (not applicable to Alberta residents). **Note:** *Preference for selection is outlined under the second question on page 4.*

Q. What do I need to do if the WCVN offers me a non-IPA seat?

An applicant who is offered admission to the WCVN through a non-IPA seat must submit a \$1,000 non-refundable deposit at the time of acceptance. This deposit will be credited toward first-year tuition once classes begin.





Stay in Western Canada and achieve your dream of becoming a veterinarian at the WCVM — a veterinary college that has an international reputation for producing high-quality, practice-ready graduates.



Q. What happens if a student declines a non-IPA seat?

As we do for each provincial pool, the WCVM will maintain a wait list in case an applicant declines admission to a non-IPA seat.

Q. Will admission through a non-IPA seat affect my education experience at the WCVM?

Being admitted through a non-IPA seat will have no impact on a student's education experience at the WCVM or in the college's DVM program.

Across Canada, admission to veterinary programs in all five schools is highly competitive. Because of the high level of interest and the limited number of seats, unsuccessful western Canadian applicants often decide to attend international veterinary schools.

The non-IPA seats available for fall 2023 entry at the WCVM offer another option to students who wish to pursue their dream of becoming a veterinarian. While the program's tuition rate is very close to international rates, the advantage is that western Canadian students can study close to home and learn in the region where most graduates will stay and practise.



UNIVERSITY OF SASKATCHEWAN
Western College of
Veterinary Medicine
[USASK.CA/WCVM](http://usask.ca/wcvm)

For more information, please contact:
WCVM Admissions
wcvm.admissions@usask.ca
wcvm.usask.ca